

D

D

C

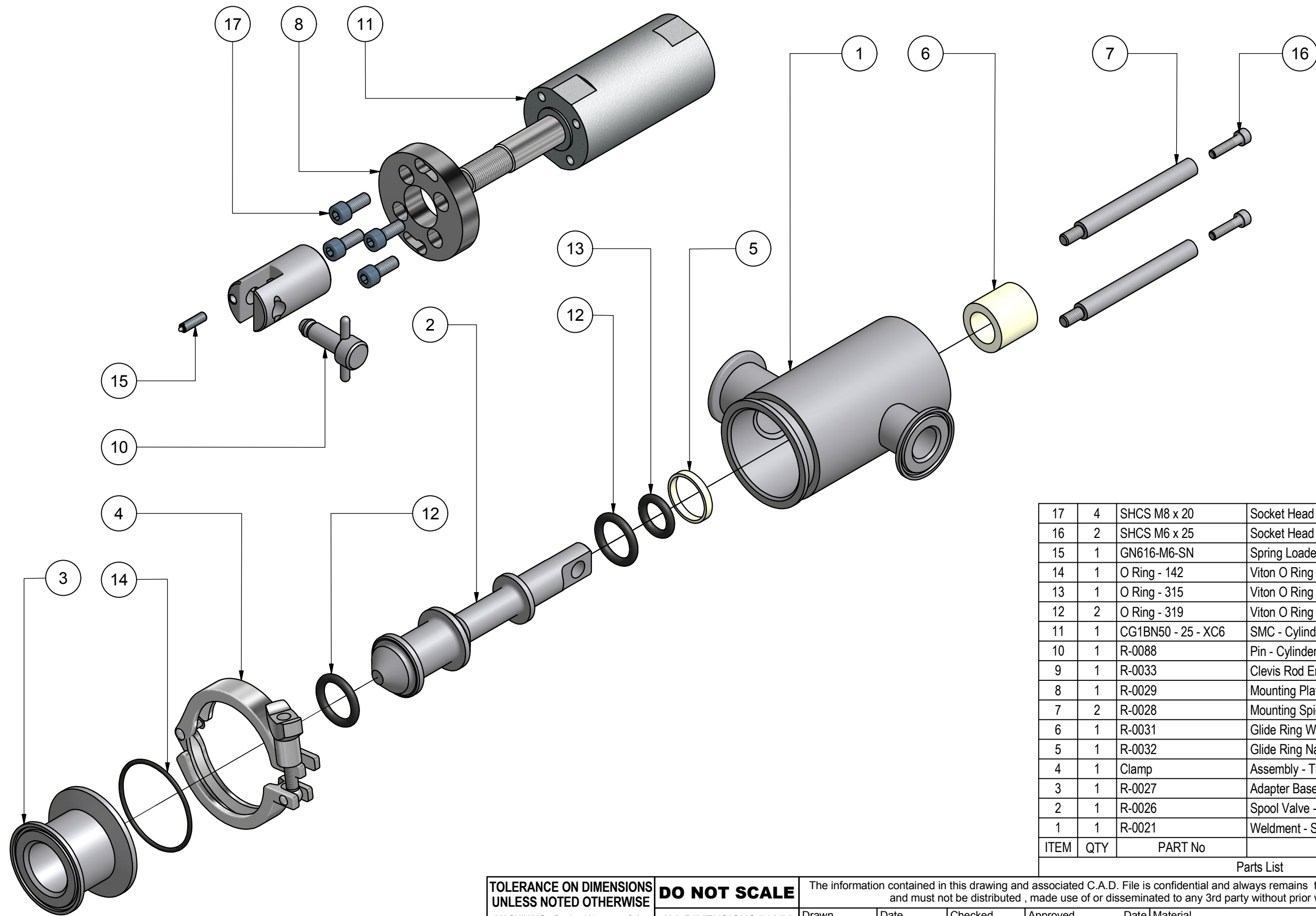
C

B

B

A

A



17	4	SHCS M8 x 20	Socket Head Cap Screw M8 x 20
16	2	SHCS M6 x 25	Socket Head Cap Screw M6 x 25
15	1	GN616-M6-SN	Spring Loaded Plunger - M6 x 20
14	1	O Ring - 142	Viton O Ring - 142
13	1	O Ring - 315	Viton O Ring - 315
12	2	O Ring - 319	Viton O Ring - 319
11	1	CG1BN50 - 25 - XC6	SMC - Cylinder - 25
10	1	R-0088	Pin - Cylinder Rod Retainer
9	1	R-0033	Clevis Rod End - Spool Valve
8	1	R-0029	Mounting Plate - Spool Valve Cylinder
7	2	R-0028	Mounting Spigot - Spool Valve Cylinder
6	1	R-0031	Glide Ring Wide - Spool Valve
5	1	R-0032	Glide Ring Narrow - Spool Valve
4	1	Clamp	Assembly - TriClover Clamp
3	1	R-0027	Adapter Base - Spool Valve
2	1	R-0026	Spool Valve - Spindle
1	1	R-0021	Weldment - Spool Valve Body
ITEM	QTY	PART No	DESCRIPTION

Parts List

**TOLERANCE ON DIMENSIONS UNLESS NOTED OTHERWISE**

MACHINING - Decimal No	± 0.1
MACHINING - Whole No	± 0.2
MACHINING - Surface Finish	3.2/√
FABRICATION - up to 100	± 0.5
FABRICATION - 100 to 300	± 1.0
FABRICATION - over 300	± 1.5
ALL ANGLES	± 0.5°

**DO NOT SCALE**

ALL DIMENSIONS IN MM UNLESS NOTED OTHERWISE

3RD ANGLE PROJECTION

The information contained in this drawing and associated C.A.D. File is confidential and always remains the property of **Rentafill Pty Ltd** and must not be distributed, made use of or disseminated to any 3rd party without prior written consent.

Drawn	Date	Checked	Approved	Date	Material	Mass			
SAP	24/05/2010				Section ICP - SPOOL VALVE	SAP			
<p align="center"><b>RENTAFILL Pty Ltd</b></p> Unit 11,6 Leighton Place Hornsby NSW 2068 PH: +61 2 9987 1871					Title <b>Assembly - Spool Valve</b>				
					Part No.	Rev	Scale(s)	Size	Sheet
					R-0020	A	1:2.5	A3	1 / 1